



Introduction to Patch Antenna Array with Parallel Feeding Network

Neil (Bing) Hao

12-Aug-2020

<http://uniteng.com>

Part I: Introduction

In this article, a 24Ghz Four Patches Antenna Array (Fig.1) with a Parallel Feeding Network is discussed. Parallel Feeding Network generally has wider impedance bandwidth than Serial Feeding Network. Although, according to the FCC's requirements, all 24Ghz Radars must work within the relative narrow 200Mhz ISM band, but wider impedance bandwidth can still benefit in more substrate and manufacturer selections.

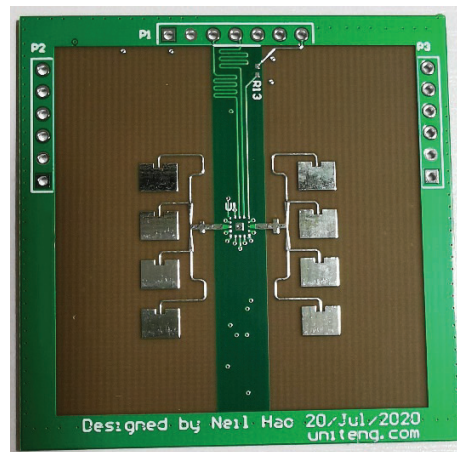


Fig.1: The PCB of Antenna Array

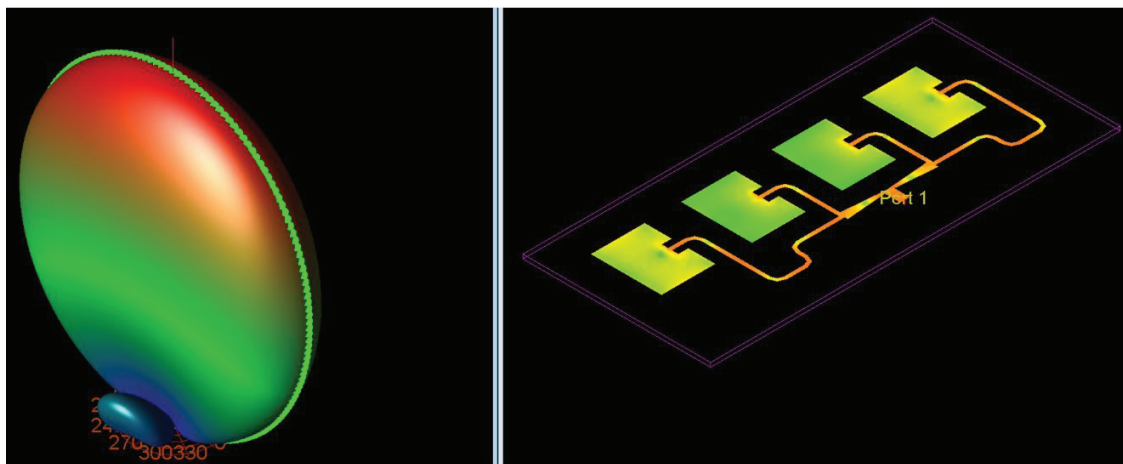


Fig.2: Far Field Simulation